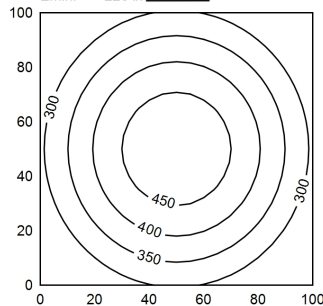


100 x 100 cm
Em: 359 lx
Emax: 487 lx
Emin: 226 lx
= 100 cm



| | |
|--|---|
| Light source | LED |
| Work equipment | Without |
| Connected load | 22 - 26 V; DC |
| Power consumption | ca. 16 W |
| Luminous flux | approx. 1.140 lm |
| Luminous efficiency ¹⁾ | approx. 71 lm/W |
| Light type/-color | Daylight |
| Colour temperatur | approx. 5.600 K |
| Color rendering index | CRI ≥ 80 |
| Light distribution | Direct; Symmetric |
| Beam angle | 90° |
| Chromaticity tolerance LED | < 5 SDCM |
| Glare control | optical film |
| Luminance (L65) | ≤ 13.000 cd/m ² |
| UGR class (4H 8H; EN 12464-1) | ≤ 25 |
| System of protection/Class | IP 68 - 1 m / IPX9; III |
| Technology | Switchable |
| Operation | External |
| Housing | Aluminium; Anodised; Aluminium coloured anodised Borosilicate |
| Light source cover | |
| Mains lead | Built-in plug; RSFPM 5/0.5 M |
| Design | mounted version |
| Fastening | Mounting rail; Tap hole 2xM6 |
| Maximum ambient temperature | 55 °C |
| Decorative contrast side parts | Metallic silver |
| EAN | 4013330049157 |
| Weight without/incl. packaging | ca. 2,5 kg; 2,9 kg |
| Dimensions (dimensional drawing) | A=420mm |
| Packaging dimensions | ca. 600 mm; 200 mm; 110 mm |
| Special features | Light forming; Connection on the side |

¹⁾ For luminaires with separate control gear, the luminous efficacy refers to the luminaire head without control gear